



SPIERINGS CRANES

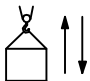

Make: SPIERINGS Type: SK1265-AT6

Crane specification (Jib length 60 m)

Serial number

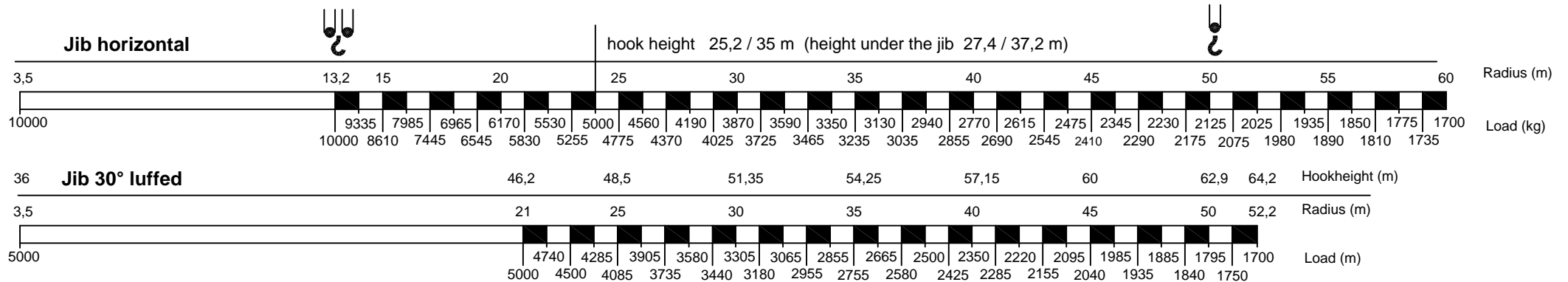
Year of construction

Crane group : A3 as per FEM 1.001	Max. load	Max.radius with max. load	Max. capacity	Max. jib length
Loadspectrum : Q1 as per FEM 1.001	10,0 tonne	13,2 m	132 tm	60 m
Classification : U4 as per FEM 1.001				
Stability : as per FEM 1.001				

Speeds Jib horizontal / jib 30° luffed  <table border="1"> <tr><th>m/min</th><th>kg</th></tr> <tr><td>15</td><td>10000</td></tr> <tr><td>30</td><td>5000</td></tr> <tr><td>45</td><td>2500</td></tr> <tr><td>75</td><td>0</td></tr> </table>	m/min	kg	15	10000	30	5000	45	2500	75	0	All motions with hydraulic proportional controls. Luffing the jib 30° can be controlled from crane cab or by remote control. Crane can be driven in its erected position under special conditions (refer user guide).	Continuous slewing of the crane (360°) with the outriggers out and support pads down. The crane should be folded in at wind force 9 (Bf) (21 m/sec) or when not in use for a longer period. Operating temperature range from -15°C till +40°C	Counterweight Crane : 13600 kg. Rated lifting capacity is net capacity. Max. line pull force : 2500 kg. 2 parts of line : 5000 kg - 1700 kg 4 parts of line : 10000 kg - 5000 kg Sail area of the load max.: 1,0 m ² / ton.	Outriggers positioned according to lifting chart Outrigger support base : 7,95 x 7,66 m. Operation allowed up to wind force 7 (14 m/s) Outrigger support base : 7,95 x 5,72 m. Operation allowed up to wind force 7 (14 m/s) Max. outrigger force: 520 kN.
	m/min	kg												
15	10000													
30	5000													
45	2500													
75	0													
0 - 70 m/min  0-0,7 r/min														

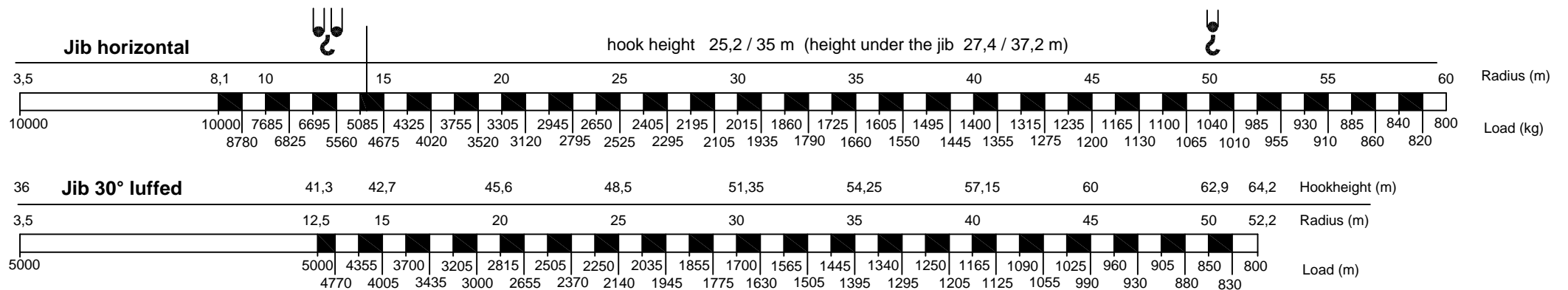
Lifting chart

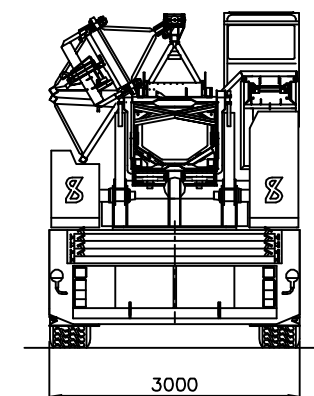
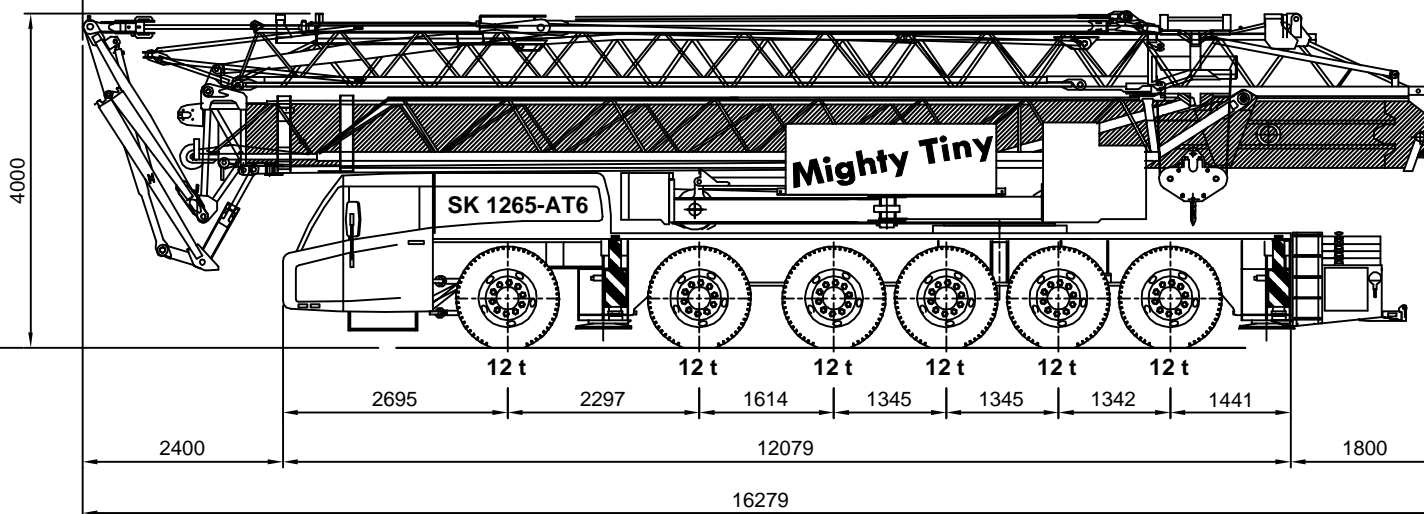
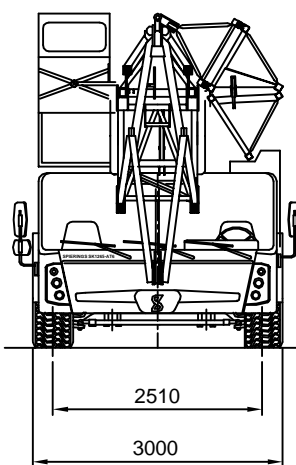
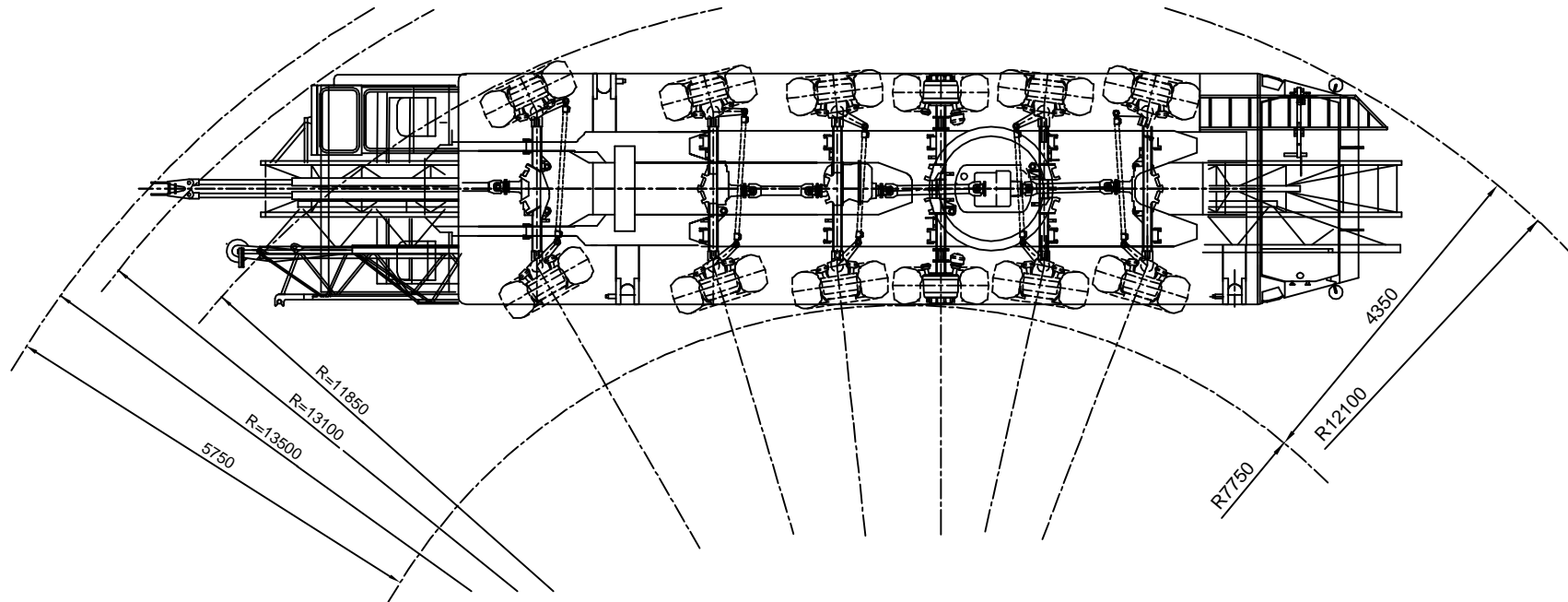
Outrigger support base : 7,95 m x 7,66 m



Lifting chart

Outrigger support base : 7,95 m x 5,72 m





SPIERINGS HYDRAULIC FOLDING CRANE SK 1265 - AT6

Total weight: 72000 kg
Changes subject to modifications

SPIERINGS
MOBILE CRANES

Merwedestraat 15
5347 KZ Oss NL
Tel. +31 (0)412-626964
Fax +31 (0)412-645299
www.spieringscranes.com

121-00126102

SPIERINGS

HYDRAULIC FOLDING CRANE

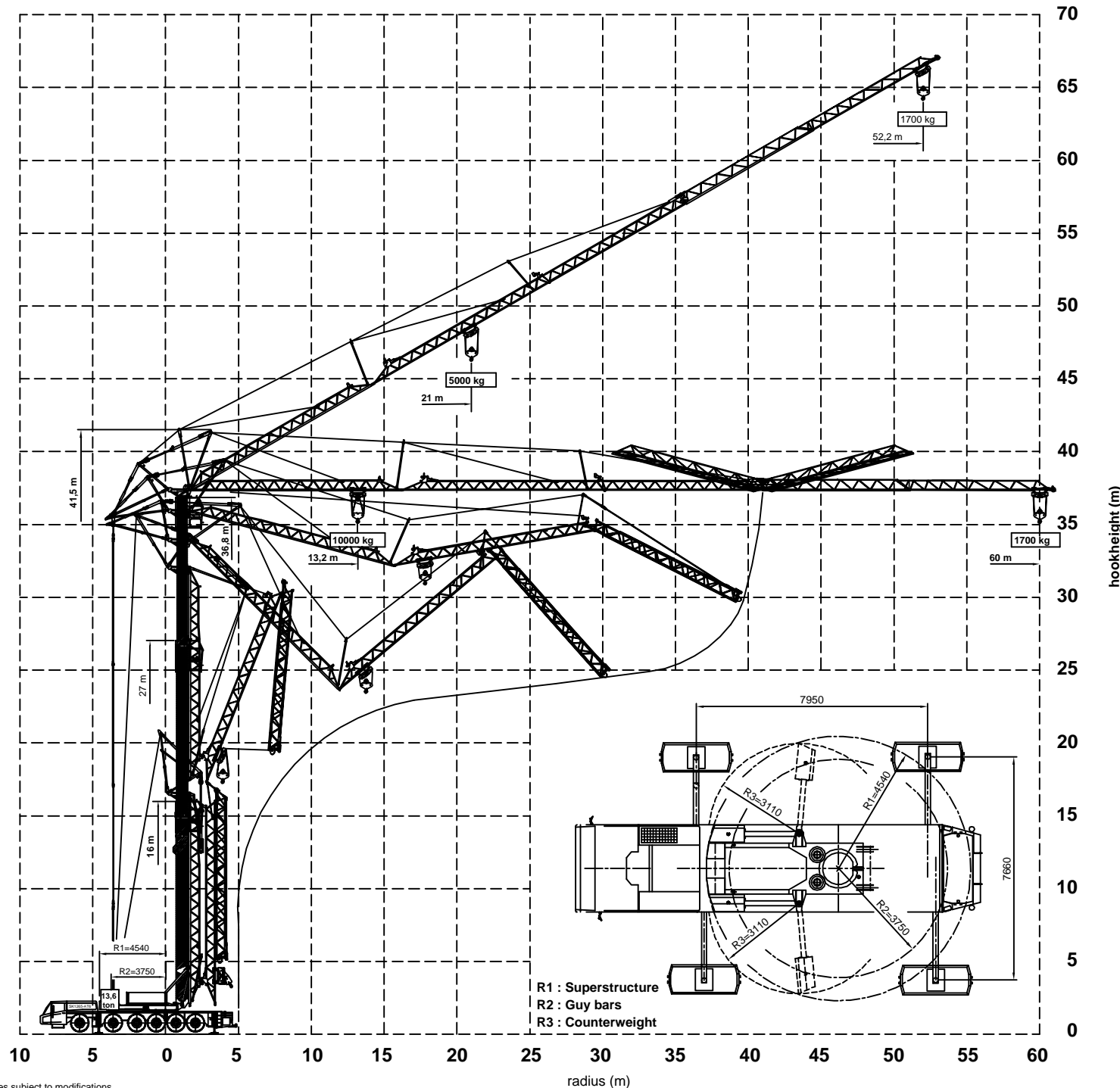
SK1265-AT6

Erection procedure of the crane

Jib radius 60 m

Max. outrigger force : 520 kN
 Outrigger support pads : 750x600 mm
 Ground pressure : 1,15N/mm²
 Jib can be unfolded through 360°
 Luffing the jib 30° can be controlled from
 the crane cab or remote control

Outrigger support plates : 2500x1000 mm
 surface : 2,35 m²
 Ground pressure : 0,22 N/mm²



R1 : Superstructure
 R2 : Guy bars
 R3 : Counterweight

Changes subject to modifications

SPIERINGS
MOBILE CRANES
 Merwedestraat 15
 5347 KZ Oss NL
 Tel. +31 (0)412-626964
 Fax +31 (0)412-645299
www.spieringscranes.com

SPIERINGS

HYDRAULIC FOLDING CRANE

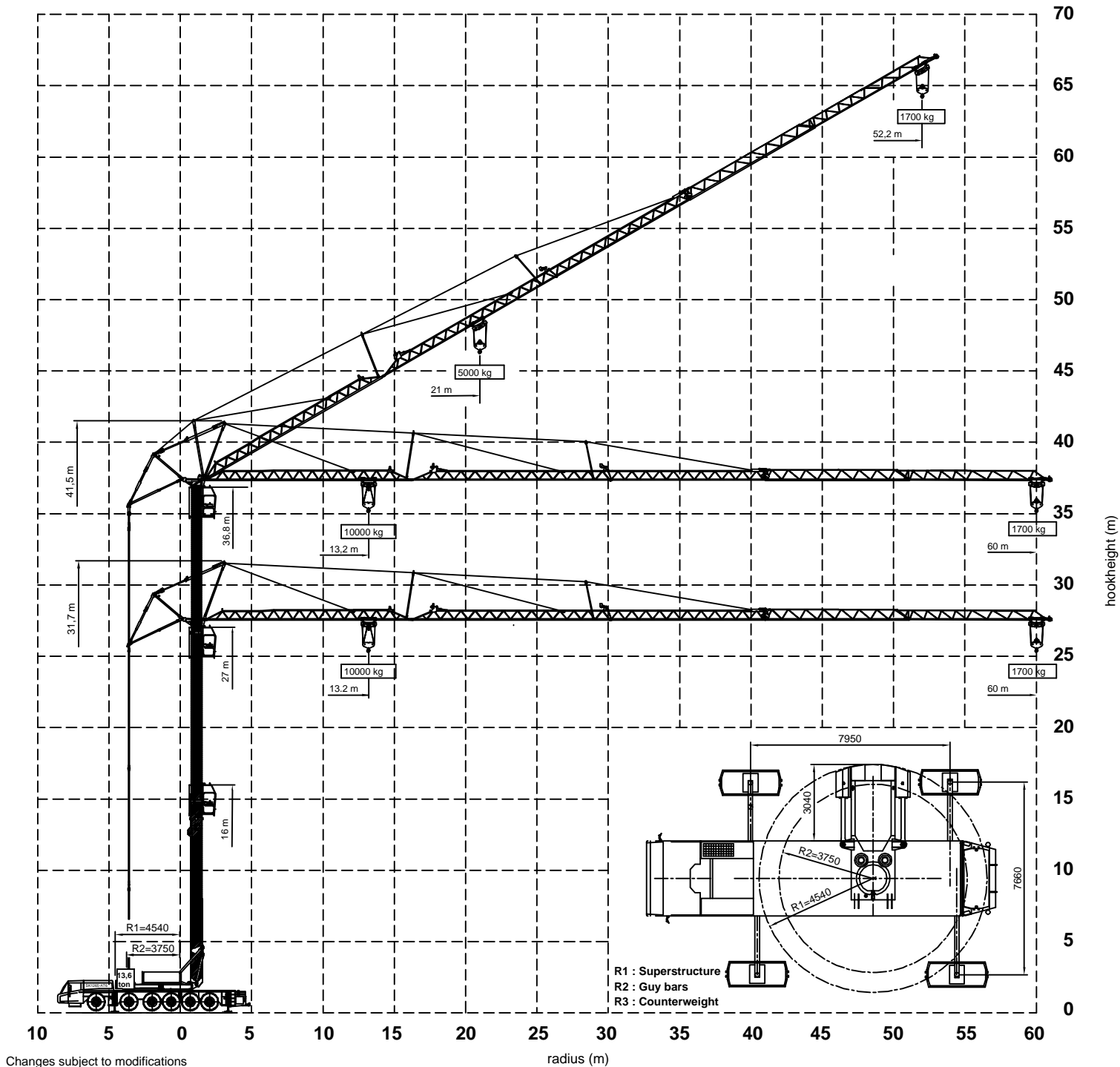
SK1265-AT6

Hoisting Specifications

Jib radius 60 m

Outrigger support base

7,95 m x 7,66 m



Changes subject to modifications

SPIERINGS
MOBILE CRANES

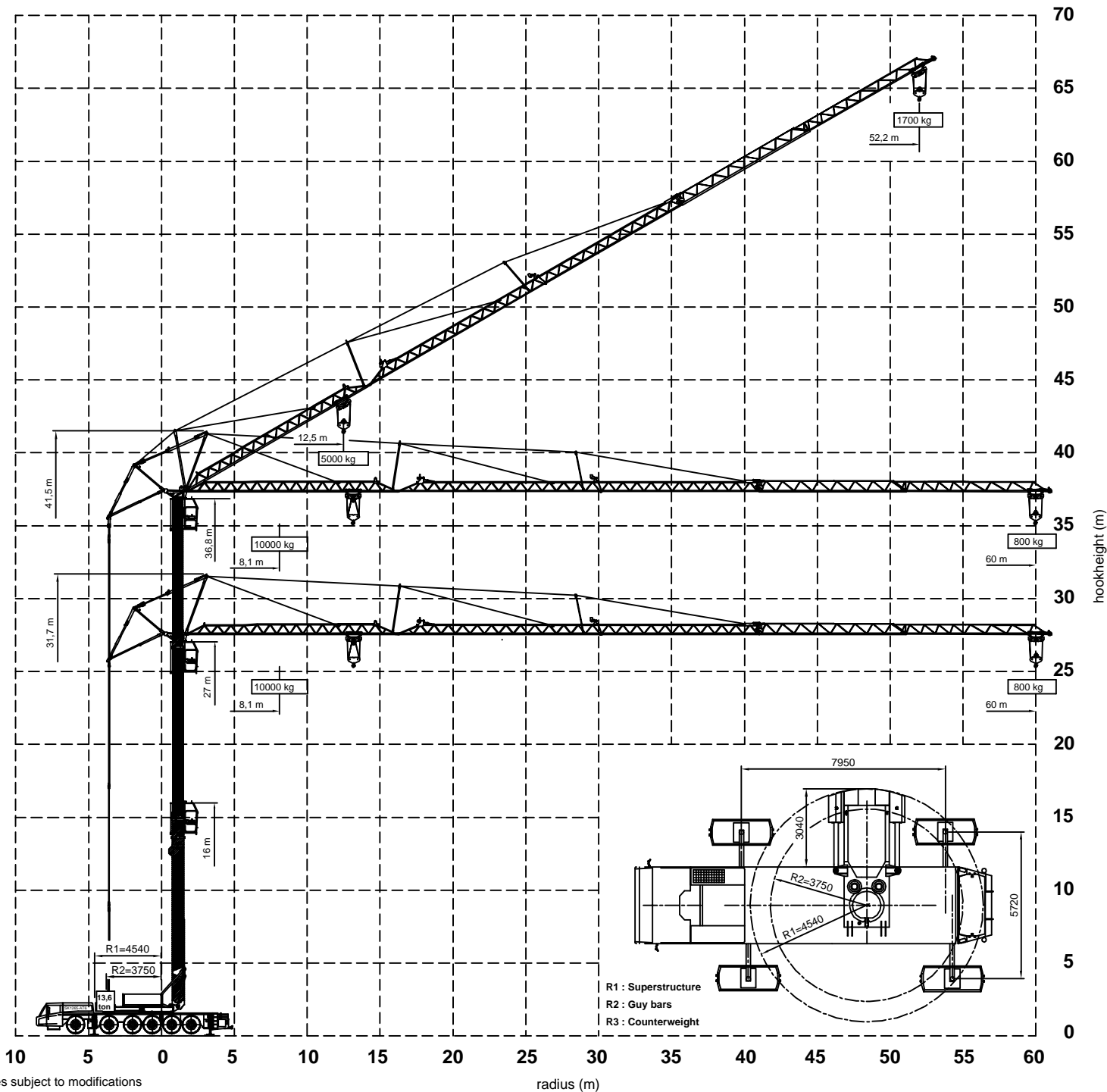
Merwedestraat 15
5347 KZ Oss NL
Tel. +31 (0)412-626964
Fax +31 (0)412-645299
www.spieringscranes.com

121-00126104

SPIERINGS HYDRAULIC FOLDING CRANE SK1265-AT6

Hoisting Specifications
Jib radius 60 m

Outrigger support base
7,95 m x 5,72 m



Changes subject to modifications

radius (m)

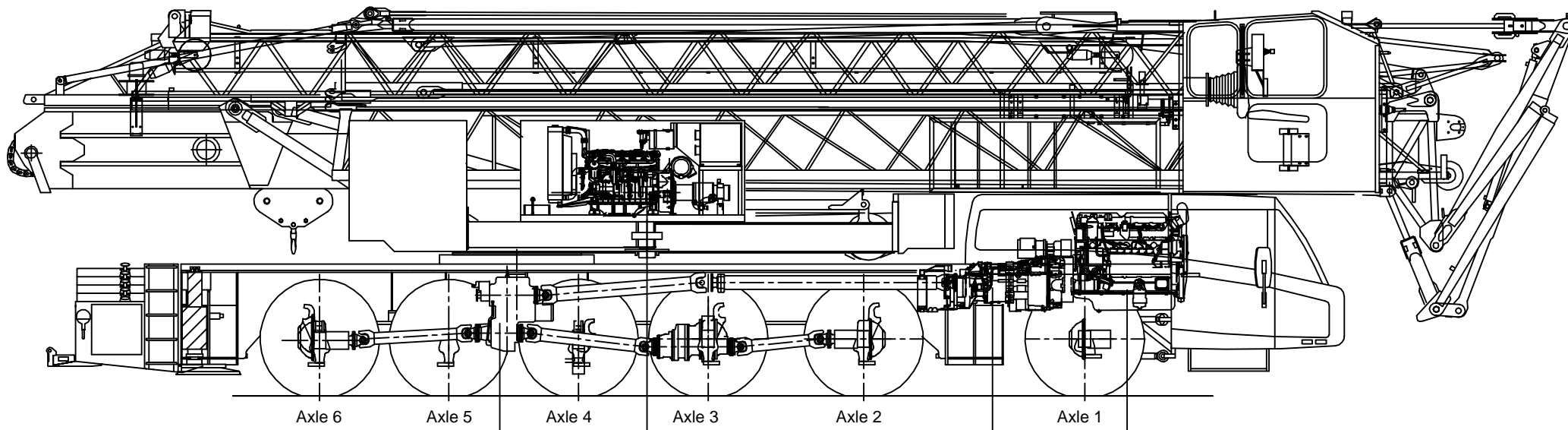
hookheight (m)

R1 : Superstructure
R2 : Guy bars
R3 : Counterweight

SPIERINGS
MOBILE CRANES

Merwedestraat 15
5347 KZ Oss NL
Tel. +31 (0)412-626964
Fax +31 (0)412-645299
www.spieringscranes.com

121-00126105



Transfer box:
 STEYR VG2001/396
 Road gear $i=0,89$
 Off road gear $i=1,54$

Crane diesel engine:
 John Deere: 4045HF285-T3
 Power: 104 kW (2400 tpm)
 Torque: 387 Nm (1500 tpm)

Gearbox:
 ZF 16AS2601
 Automatic
 Dry plate clutch
 + intarder

Carrier diesel engine:
 Euro IV
 DAF: MX 375 (12,9 ltr)
 Power: 375 kW (1900 tpm)
 Torque: 2500 Nm (1000-1410 tpm)

- Axle 1 : Steer axle
- Axle 2 : Steer drive axle (end reduction $i=7,29$)
- Axle 3 : Steer drive axle (end reduction $i=7,29$)
- Axle 4 : Axle , non steered and non powered
- Axle 5 : Steer axle
- Axle 6 : Steer drive axle (end reduction $i=7,29$)

- Tyres : 445/75 R22,5
- Suspension: hydro-pneumatic on all axles; stroke cyl. : 247 mm
- Max. speed carrier : 85 km/h
- Min. speed carrier (engine at 1000 rpm) : 1,6 km/h
- Overall weight : 72.000 kg.

Drive train Spierings Folding Crane SK 1265-AT6

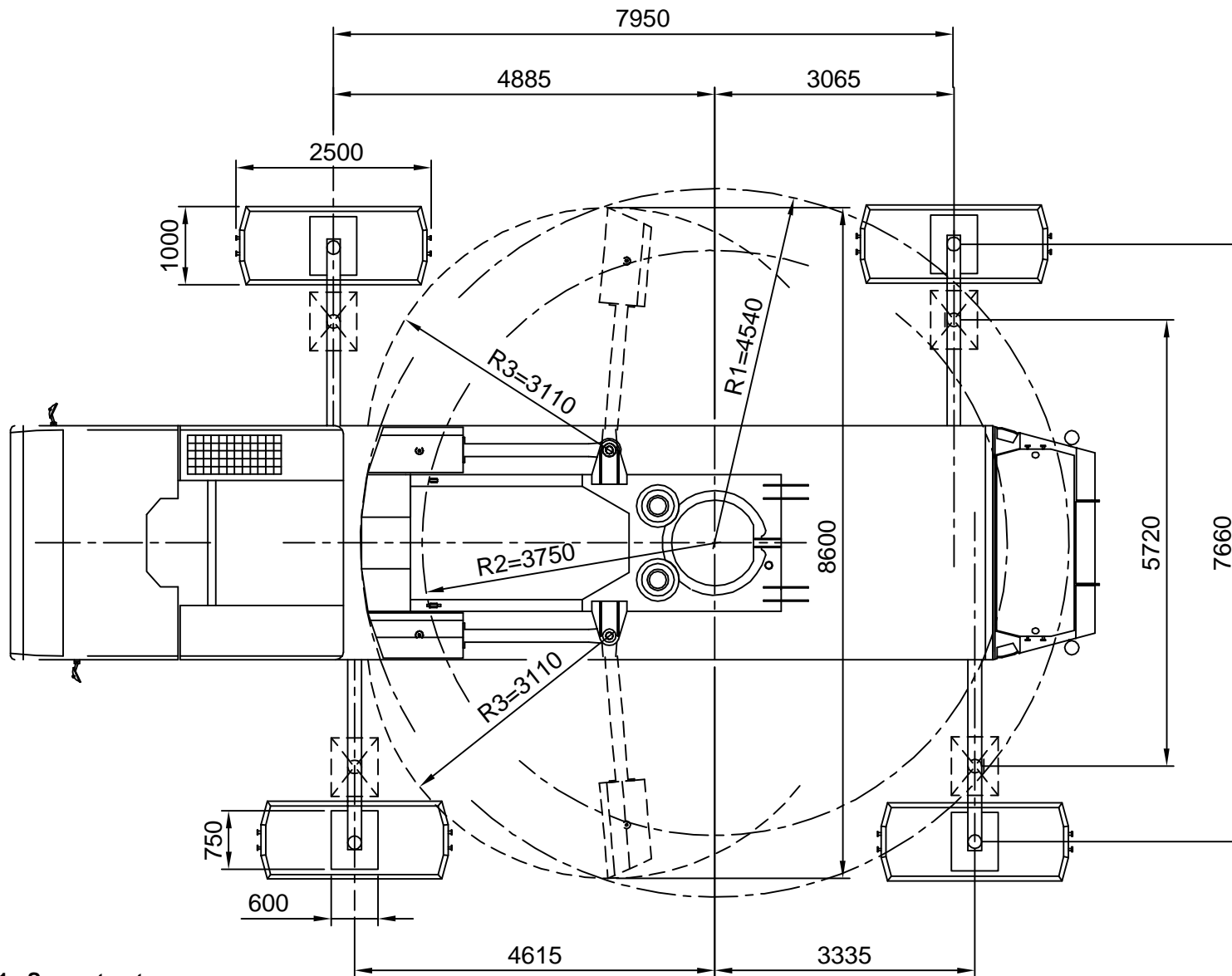
Changes subject to modifications

SPIERINGS
MOBILE CRANES
 Merwedestraat 15
 5347 KZ Oss NL
 Tel. +31 (0)412-626864
 Fax +31 (0)412-645299
 www.spieringscranes.com
 121-00126106A

SPIERINGS

HYDRAULIC FOLDING CRANE

SK 1265 - AT6



R1 : Superstructure
 R2 : Guy bars
 R3 : Counterweight

Outrigger support base	
Max. outrigger force	520 kN
Outrigger support pads	750x600 mm
Ground pressure	1,15 N/mm ²
Outrigger support plates	2500x1000 mm
Surface	2,35 m ²
Ground pressure	0,22 N/mm ²

SPIERINGS
MOBILE CRANES

Merwedestraat 15
 5347 KZ Oss NL
 Tel. +31 (0)412-626964
 Fax +31 (0)412-645299
www.spieringscranes.com

121-00126107A